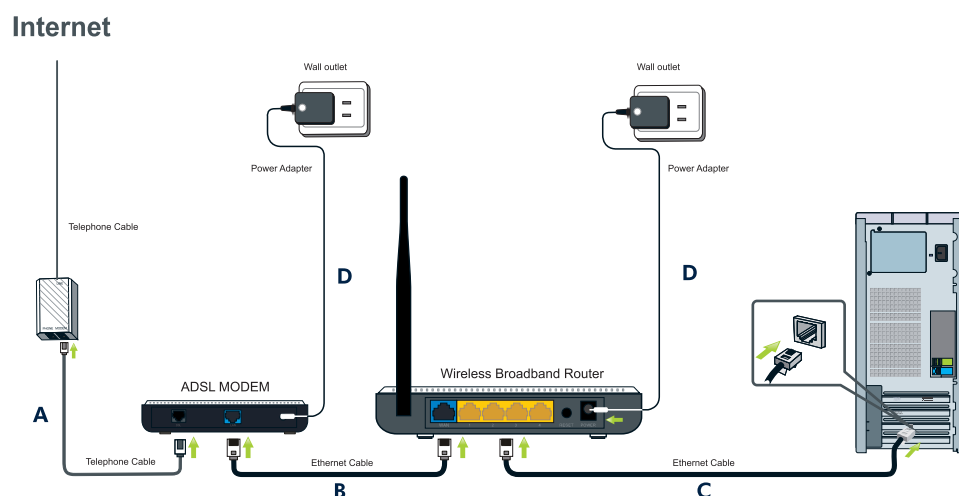


## 1. Connecting your wireless Router



### Note:

Before you begin, make sure your computer and modem are turned off. If you're using Static IP, Dynamic IP or PPPoA other than PPPoE to access Internet, refer to the user manual.

A. Connect one end of the telephone cable to the DSL port on your modem and the other end of the cable into the splitter;

B. Connect one end of the Ethernet cable to RJ45 port of your modem and attach the other end to the WAN port of the QPCOM Router;

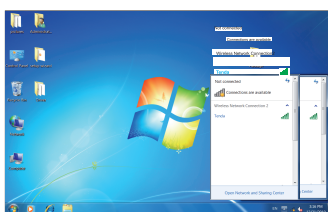
C. Connect the new cable (not provided in the box) to one of the 4 LAN on the QPCOM Router, and plug the other end into your computer;

D. Complete the process by connecting the power adapter to the Power input of your modem, and plug the other end into a wall outlet. Do the same procedure to power up the QPCOM Router

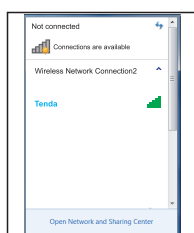
[www.qpcom.com](http://www.qpcom.com)

## 3. Connecting to the wireless network

A. Click Network on the right end of the taskbar to search your SSID;



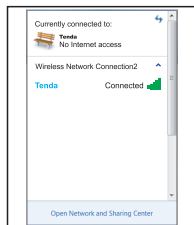
B. Locate the SSID and connect;



C. After connecting to the SSID, continue the process by following the onscreen instruction;



D. You're now authorized to access the Internet wirelessly.



[www.qpcom.com](http://www.qpcom.com)

## 2. Configuring your Wireless Router

This product can be set up through both Easy-Setup and CD Setup Wizard.

1) Easy-Web Setup: This option is the easiest. The world's most intuitive Utility Interface guides you to complete setup in minute.

A. Open your web browser, it detects connection automatically. Otherwise enter 192.168.1.254 show below:

<http://192.168.1.254>

B. After logging in, you will see the Basic Setup window below;

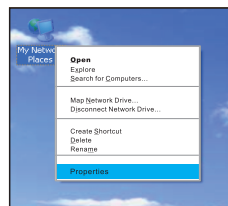
The screenshot shows the 'QPCOM Internet Access' Basic Setup window. It includes fields for 'Access Method' (radio buttons for ADSL Dynamic and DHCP), 'Access Account', and 'Access Password'. There is also a section for 'Wireless encryption' with an 'Access Password' field. The window has 'OK' and 'Cancel' buttons.

C. You're now connected to the Internet

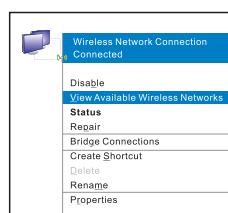
[www.qpcom.com](http://www.qpcom.com)

2) Under Window XP

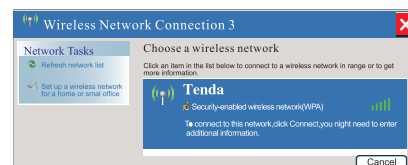
A. Right click My Network Places on your PC and select Properties;



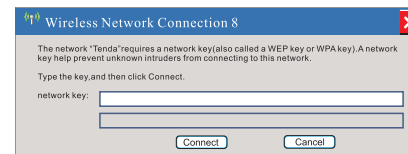
B. Right click Wireless Network Connection and select View Available Wireless Networks;



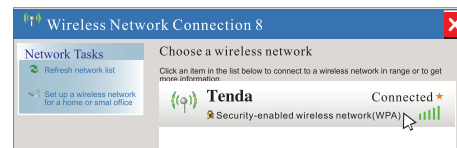
C. Select your SSID to connect;



D. After connecting to the SSID, continue the process by following the onscreen instruction;



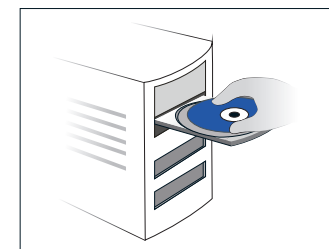
E. You're now accessing to wireless network.



[www.qpcom.com](http://www.qpcom.com)

2) CD setup Wizard:

A. Insert the QPCOM CD into the CD-ROM drive of your PC. The CD will automatically start. If the CD does not run automatically. Browse the CD and double-click on Setup;



B. Click "Configure" to continue;



C. And now you will be prompted with the Basic Setup window below;

The screenshot shows the 'QPCOM Internet Access' Basic Setup window. It includes fields for 'Access Method' (radio buttons for ADSL Dynamic and DHCP), 'Access Account', and 'Access Password'. There is also a section for 'Wireless encryption' with an 'Access Password' field. The window has 'OK' and 'Cancel' buttons.

D. You're now connected to the Internet

[www.qpcom.com](http://www.qpcom.com)

## 4. Problem shootings

**Question: Forget the password for login to the router, what should I do?**

**Answer:** In this case, you'll have to restore the router's settings to factory default or reset the router. Press and hold the reset button located on the back panel of the router when it is powered on, for over five seconds until the SYS indicator goes off, which indicates successful reset.

**Note:**

After resetting, the entire router setting will be cleared and you need to re-configure it.

**Question: My notebook computer is able to search for the signal but fails to connect to the router, why?**

**Answer:**

1. Make sure the name of the wireless network you are connecting matches with the wireless router's SSID.
2. Check the wireless signal strength, if it is weak, please re-locate the router or try to connect in a nearer place.
3. If the wireless router is encrypted, make sure the wireless adapter's encryption settings match with that of the wireless router.
4. Delete the previous wireless configuration files from your computer and re-connect.
5. Inquire the manufacture of your notebook computer or wireless adapter, and follow the related instructions to configure the router and establish connection.

**Question: My notebook can not scan the wireless signals. why?**

**Answer:** Please check the following aspects respectively.

1. If your notebook has a built-in wireless adapter, please make sure the wireless is enabled.
2. Make sure the wireless adapter is enabled. Right click "My Computer" and select "Properties", "Hardware", "Device Manager". On the device list, a red cross before the wireless adapter means the adapter is not enable, so please right click the adapter and select "Enable". However, if the wireless adapter is not found, please right click any icon and select "Scan for hardware changes" or re-install the wireless adapter (steps under Windows XP)
3. Check whether the notebook's wireless services is enable: Right click "My Computer" and select "Manage", "Services and Applications" and then view the status of "Wireless Zero Configuration" on the services screen. If the service is not started, please right click "Wireless Zero Configuration" and select start. If the startup type displays "Disable", please right click it and select "Properties" and change the startup type to automatic, and then change the status to "started".

Check whether the wireless router's wireless and broadcast SSID is enabled.

Search for the signal in a nearer place to avoid signal reduction. After doing so, if you are still unable to scan the signal, please try other wireless adapters to see if they can connect to the wireless router, if can't, please restore the router to factory default and re-configure.

[www.qpcom.com](http://www.qpcom.com)