

QP - AMP58I3000

Heavy Duty N-Female Connectors

Features

- 3 Watt transmit power
- IEEE 802.11a OFDM Compatible
- Ideal for use with 802.11a access points & routers
- 12 dB Receive Signal Gain
- Indoor Model
- Integral Lightning Protection
- All-Aluminum Construction
- Durable UV-Stable Finish
- Transmit and Receive LEDs
- Heavy Duty Connectors
- 1 Year Warranty
- International Power Supply
- Optional Cooling Fan

Available Models

Model	Connector
QP-AMP58I3000	N-Female

5.8 GHz; 802.11a Bi-Directional Amplifiers with Active Power Control

Description

QP-AMP58I3000 series are 5.8 GHz version of QPCOM's amplifiers for 802.11a wireless LANs. They are compatible with IEEE 802.11a OFDM radios as well as radios using Direct Sequence or Frequency Hopping Spread Spectrum modulation.

QPCOM's APC (automatic power control) circuit automatically adjusts the amplifier's transmit gain to provide a constant output power regardless of cable length. The receive gain compensates for cable losses and actually increases the receive sensitivity of most wireless LAN radios. The unit can be configured to deliver up to full transmit power with as little as 5 mW of input power. This feature permits long cable runs with no degradation in operating range.

The QP-AMP58I3000 5.8GHz amplifier series features an all-metal weather-proof enclosure machined from a single billet of aluminum, making it suitable for demanding commercial and military applications.

The QP-AMP58I3000 are designed for indoor installations or in weatherproof enclosures. Four mounting holes are provided on the amplifier. The indoor series amplifiers include a power supply.

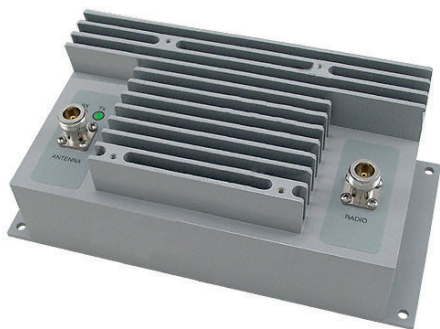
Product Availability

These amplifier products are available only for professionals assembling/installing certified systems, export, military, licensed amateur radio only and are not offered for general sale within the USA.

Note:

This QPCOM bi-directional amplifier is designed for burst half-duplex operation. It is not intended for constant transmit or CW operation. Operation of the amplifier in CW mode will damage the amplifier and void the warranty.





QP - AMP58I3000

Heavy Duty N-Female Connectors

Specifications

Transmit Power

- 3 Watts (35 dBm)

General Specifications

Frequency

- 5.3 - 5.9 GHz

Receive Gain

- 12 dB nominal

Input Power

- 5 mW (7 dBm) to 100 mW (20 dBm)

Operating Mode

- Bi-directional, half-duplex Time Division Duplex. Senses RF carrier from transmitter and automatically switches from receive to transmit mode

Amplifier Dimensions (L x D x H)

- 7.45 x 4.25 x 2.9 (inches)

- 189 x 108 x 74 (mm)

Amplifier Weight

- 3.4 lbs. (1.54 kg)

Current Draw

- 3 Amps Peak Tx and 0.15A Peak

Rx

Supply Voltage

- 12VDC -0.5V / +1V

Operating Temperature

- -40°C to 50°C

- (-40°F to 122°F)

Each Indoor Kit Includes:

- QP-AMP58I3000 Indoor Amplifier
- International Power Supply (110/220V)

Guaranteed Quality

- QP-AMP58I3000 is designed and manufactured by QPCOM Inc. in the U.S.A. and is backed by QPCOM's Limited Warranty.

