

QP - A024G15 series

Wireless LAN Grid Antenna

High Performance Die Cast Mini-Reflector 2.4 GHz; 15 dBi

Description

Superior Performance

The QPCOM Directional Mini-Reflector Grid WiFi Antenna provides 15 dBi gain with a 16° horizontal beam-width for directional applications. Its compact design makes it nearly invisible in most installations, and it can be installed for either vertical or horizontal polarization. It is ideally suited for 2.4GHz ISM band applications such as IEEE 802.11b, 802.11g and 802.11n wireless LAN systems.

Rugged and Weatherproof

This antenna's construction features a rust-proof die cast aluminum reflector grid for superior strength and light weight. This antenna's 2-piece reflector grid is simple to assemble and significantly reduces shipping costs. The grid surface is UV powder coated for durability and aesthetics. The open-frame grid design minimizes wind loading.

The QP-A024G15 antenna is supplied with a 60 degree tilt and swivel mast mount kit. This allows installation at various degrees of incline for easy alignment. It can be adjusted up or down from 0° to 60°.

Features

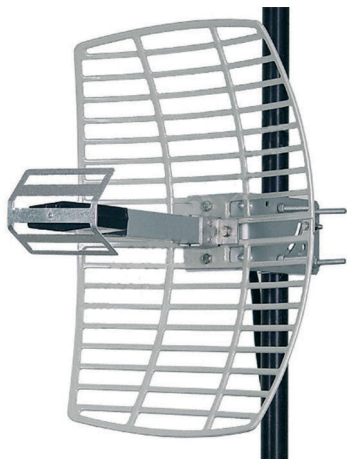
- Superior performance
- Die Cast aluminum construction
- UV stable light gray powder coat finish
- All weather operation
- 16° beam-width
- 12 inch coax lead
- Easy to assemble
- RoHS Compliant

Applications

- 2.4 GHz ISM Band
- IEEE 802.11b, 802.11g
- Wireless LAN
- IEEE 802.11n (Pre-N, Draft-N, MIMO)
- Applications
- WiFi Systems
- Long-range Directional
- Applications
- Point to Point Systems
- Point to Multi-point Systems
- Wireless Bridges
- Backhaul Applications
- Wireless Video Systems

Wind Loading Data

Wind Speed (MPH)	Loading (2.1 sq. ft.)
100	10.0 lb.
400	15.6 lb



QP - AO24G15 series

Wireless LAN Grid Antenna

Specifications

Electrical Specifications

Frequency	2400-2500 MHz
Gain	15 dBi
Polarization	Horizontal or Vertical
Horizontal Beam Width	16°
Vertical Beam Width	21°
Front to Back Ratio	20 dB
Impedance	50 Ohm
Max. Input Power	100 Watts
VSWR	< 1.5:1 avg.

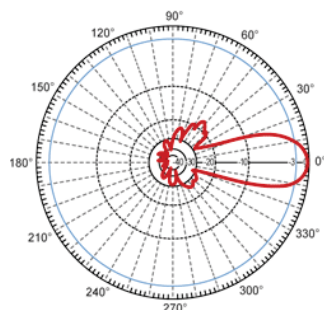
Physical Specifications

Weight	3 lbs. (1.4 kg)
Grid Dimensions	11.8 in (300mm) x 15.7 in (400 mm)
Mounting	1.25 in. thru 2 in. (31.8 – 50.8 mm) diameter mast max
Elevation Angle	0 to +15 degrees
RoHS Compliant	Yes
Operating Temperature	-40° C to to 85° C (-40° F to 185° F)

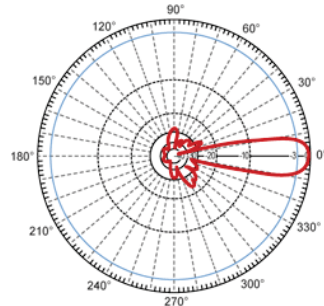
Available Models

Model	Connector
QP-AO24G15-NF	N-Female
QP-AO24G15-NM	N-Male
QP-AO24G15-TF	TNC-Female
QP-AO24G15-TM	TNC-Male
QP-AO24G15-SM	SMA-Male
QP-AO24G15-RTP	Reverse Polarity TNC Plug
QP-AO24G15-RTJ	Reverse Polarity TNC Jack
QP-AO24G24-RNP	Reverse Polarity N Plug
QP-AO24G15-RNJ	Reverse Polarity N Jack
QP-AO24G15-RSP	Reverse Polarity SMA Plug

RF Antenna Patterns



Vertical



Horizontal